

IOC/UNESCO Bulletin No. 5
As of 20 March 2011

Location of each Municipal

Miyagi Pref.; <http://www.pref.miyagi.jp/english/profile/map.htm>

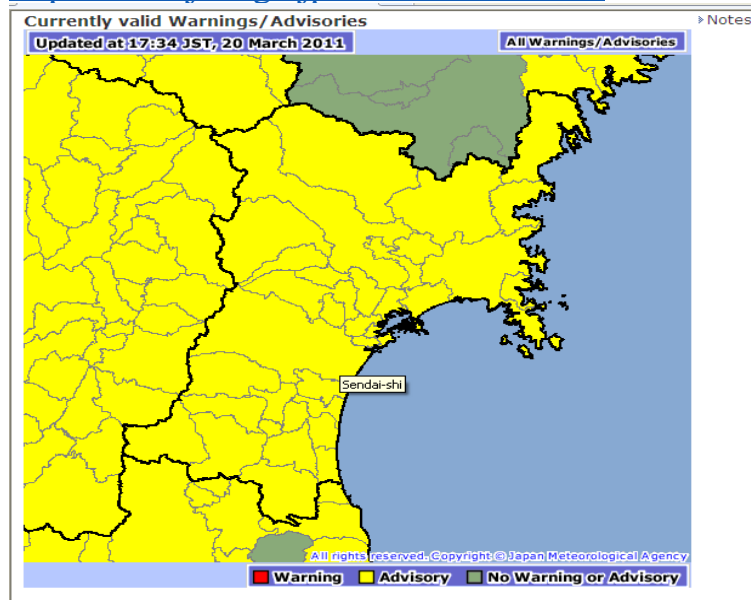
Also you can find from here for others;

http://www.jma.go.jp/en/warn/310_table.html

Assign the Prefecture from here; In this case “Mitagi”.

The screenshot shows the JMA website interface. At the top, there are navigation tabs: Home, Weather/Earthquake, and News Releases. Below these, a breadcrumb trail reads: Home > Weather and Earthquakes > Weather Warnings/Advisories. The main heading is 'Weather Warnings/Advisories: Iwate'. To the right of this heading is a search box with the text 'Get more information on this area'. Below the heading, there is a dropdown menu for 'Area' set to 'Iwate'. To the right of the dropdown is a 'print' button. Below the dropdown, a list of municipalities is shown, including Iwate, Yamagata, Miyagi, Fukushima, Ibaraki, Gumma, Tochigi, Saitama, Chiba, Tokyo, Kanagawa, Yamanashi, Nagano, Shizuoka, Niigata, Yamanashi, Toyama, Ishikawa, Fukui, Shizuoka, Gifu, Aichi, Mie, Osaka, Hyogo, Kyoto, Shiga, and Nara. On the right side of the page, there are links for 'Notes', 'Advisories', and 'Warnings/Advisories'. The page is updated at 16:58 JST, 20 March 20.

<http://www.jma.go.jp/en/warn/312.html>



Click the region → Name of the municipal is shown on the screen.
xxx – shi means City, xxx – machi or cho means Town, xxx – mura means Village

Casualties by the Earthquake and Tsunami

As of 06:00z 20 Mar 2011

The National Police Agency

- Dead: 8,199
- Missing: 12,722
- Road destruction: 1,446
- Bridge destruction: 48
- Railway destruction: 15

Number of Evacuees at each Prefecture;

- Aomori: 367
- Iwate: 49,454
- Miyagi: 146,843; including from Fukushima
- Yamagata: 3,731; including from Miyagi and Fukushima
- Fukushima: 131,665
- Tokyo: 546; From Miyagi and Fukushima
- Ibaragi: 4,274; including from Fukushima
- Tochigi: 3,108; including from Fukushima
- Gunma: 2,144; From Miyagi and Fukushima
- Saitama: 3,183; under survey
- Chiba: 1,237; including from Fukushima and Miyagi
- Kanagawa: 166; from Fukushima
- Niigata: 8,478; from Fukushima
- Yamanashi: 180; from Fukushima and Miyagi
- Nagano: 101; from Fukushima

As of 00:00Z 20 March 2011

The Japanese Fire and Disaster Management Agency (FDMA)

1. Dead: 4,656 persons
2. Missing: 8,008 persons
3. Injured: 2,678 persons
4. Fires: 325 events (322 fires were already extinguished)
5. Number of evacuees: 389,910

(Note: Numbers are based on the report from each Prefecture)

C: City, T: Town, V: Village

Local G: Information is taken from web of each municipality

Prefecture	City, Town, Village & Population	dead	missing	Note: Tsunami related disaster (Whole area / inundation area in km ²)
Hokkaido	Hakodate C 294,264	1		Local G <ul style="list-style-type: none"> • One man dead by drowning • 128 houses flooded • 5 fishing boats; sinking • Flood area; Benten, Suehiro,

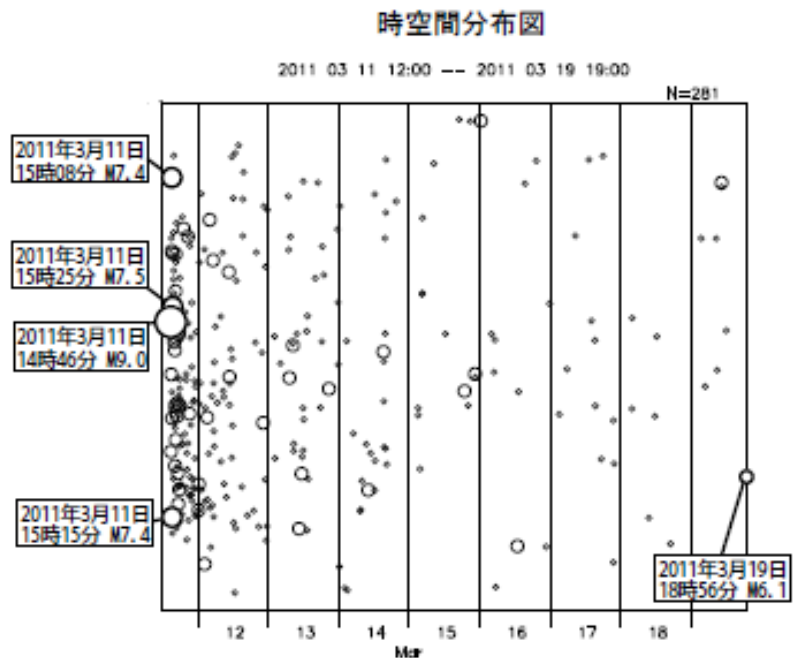
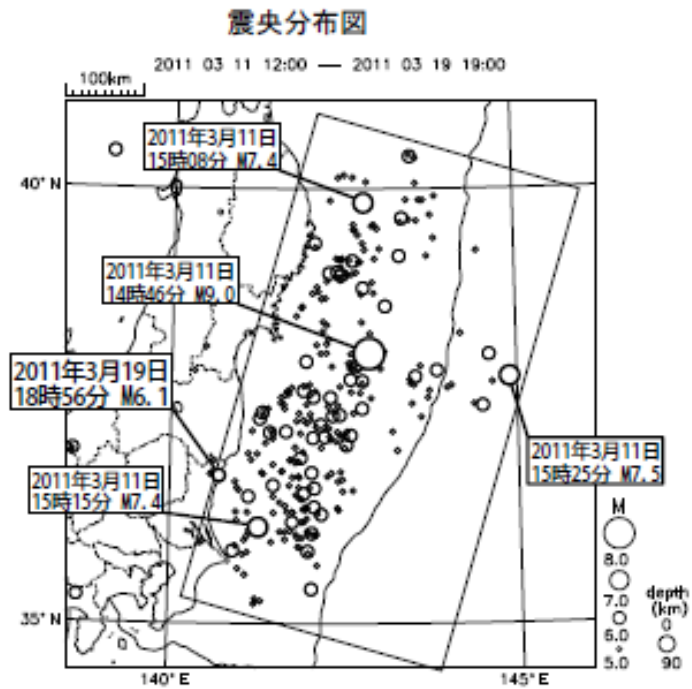
				Toyokawa, Oote, Wakamatsu, Kaigan, Minato-Chou
Aomori	Hachinohe C 241,308	1	1	305 / 2 (FDMA) <ul style="list-style-type: none"> • Wide-area are inundated
	Misawa C 42,226	2		Local G <ul style="list-style-type: none"> • 30 houses: flood • Evacuation shelter was closed 15 March
	Hashikami T			94 / 0.5
Iwate				<ul style="list-style-type: none"> • JR Train stop: Tohoku-Akita shinkansen, Ofunato, Kitagami, Kamaishi, Yamada lines etc (Recovering; no prospect) • Other lines are partially operational
	Miyako C 59,118	256	1,700	1,260 / 9 (FDMA) <ul style="list-style-type: none"> • Severe tsunami damages • More than 10 villages are completely destroyed
	Ofunato C 40,801	220	191	323 / 6 (FDMA) <ul style="list-style-type: none"> • More than 300 houses flow out • Many houses are flooded • 3,498 houses are completely destroyed • Especially Suesaki and Hosoura regions are severely damaged. • No communication system
	Kuji C 36,651	3	2	623 / 4 Local G <ul style="list-style-type: none"> • 145 houses are destroyed • 572 boats; damaged
	Rikuzen-Takata C 23,243	420	1,783	232 / 9 (FDMA) <ul style="list-style-type: none"> • Popuration: 23,000 • Extremely severe damages • Widely inundation • No communication system • 3,600 houses are damaged
	Kamaishi C 39,294	458	470	441 / 7 (FDMA) <ul style="list-style-type: none"> • Coast-Guard building inundated up to 2nd floor

				<ul style="list-style-type: none"> • Fire Office building is flooded • No communication system
	Otsuchi T 15,293	400	639	201 / 4 Ogasawara; Iwate U. (14 Mar) <ul style="list-style-type: none"> • Whole town is severely damaged • No communication system
	Yamada T 18,745	298	Un-known	263 / 4 <ul style="list-style-type: none"> • No communication system
	Iwaizumi T 10,693	6	3	993 / 1 <ul style="list-style-type: none"> • No communication system • 40 houses are flooded
	Tanohata V 3,836	13	27	(FDMA) <ul style="list-style-type: none"> • 249 houses flow out • 148 houses are destroyed • No communication system
	Fudai V 3,094		5	70 / 0.5 (FDMA) <ul style="list-style-type: none"> • Ootanabe and Horiuchi fishing ports are severely damaged.
	Noda V 4,639	26	20	81 / 2 <ul style="list-style-type: none"> • Tsunami flow over the village government building • Severe damage in the central village • 400 houses in the Motomura District are severely damaged • No communication system
	Hirono T 17,961			303 / 1 Local G <ul style="list-style-type: none"> • No dead • 3 houses; flooded • 98 fishing boats: flow out or damaged • JR train bridge collapsed
Miyagi	Sendai C 1,046,902	13	9	(FDMA) <ul style="list-style-type: none"> • 295 bodies are recovered (Not included in this table yet) • 296,323 houses: power cut as of 17 March
	Sendai-Miyagino			58 / 20
	Sendai - Wakabayashi			48 / 29

	Sendai-Taihaku			228 / 3
	Ishinomaki C 160,336	205	448	556 / 40 (FDMA) <ul style="list-style-type: none"> Wide areas are inundated. Difficult for rescue work
	Shiogama C 56,325	12	4	18 / 5 Local G
	Kesennuma C 73,239	323	Under survey	333 / 15 (FDMA) <ul style="list-style-type: none"> Many people are isolated due to inundation of wide area
	Natori C 73,576	141	Under survey	100 / 27 (FDMA) <ul style="list-style-type: none"> Many areas are inundated
	Tagajo C 62,881	82	Under survey	20 / 6
	Iwanuma C 43,921	101	Under survey	61 / 29
	Higashi-Matsushima C 42,859	532	429	102 / 36
	Watari T 34,773	118	200	73 / 35
	Yamamoto T	276	587	64 / 24
	Matsushima T 16,193	1	31	54 / 2
	Shichigahama T 20,377	41	146	13 / 6 Local G <ul style="list-style-type: none"> Tsunami height was more than 10 m All facilities along coast were completely destroyed No communication system
	Rifu T 9,768	1	0	45 / 0.5 <ul style="list-style-type: none"> Tsunami sediment in Hamada and Suga district is about 3 cm thicknesses.
	Onagawa T 9,965	43	100	(FDMA) <ul style="list-style-type: none"> About 630 people need to be rescued Many areas are inundated
	Minami-Sanriku T 17,382	25	239	164 / 7 (FDMA) <ul style="list-style-type: none"> Many areas are inundated

Fukushima	Iwaki C 345,310	189	4	Local G <ul style="list-style-type: none"> Tsunami severely damaged area; from Kunohama to Onahama district Some areas of above are completely destroyed
	Souma C 37,919	105		198 / 29 (FDMA) <ul style="list-style-type: none"> Severe tsunami damages
	Minami-Souma C 70,971	195	350	399 / 27
	Hirono T 5,383	2	1	
	Naraha T 7,847	3	10	
	Tomiooka T 15,755	2	8	
	Okuma T 11,264	1	8	
	Futaba T 6,917	1	14	
	Namie T 20,686		370	
	Shinchi T 8,306	48	110	46 / 11
Ibaragi	Kita-Ibaragi C	5	1	Local G <ul style="list-style-type: none"> Some houses; flooded
	Hitachi C	0	0	Local G <ul style="list-style-type: none"> 35 houses: completely destroyed by tsunami, and 50 houses: partially destroyed, 556 houses; inundation Tsunami damages at Kawajiri, Aise, Kawarako and Kujihamas Ports.
	Oarai T 18,188	1		Local G <ul style="list-style-type: none"> About 2,000 houses; flooded
	Kamisui C			Local G <ul style="list-style-type: none"> 5 houses flooded 2 vessels: capsized 1 vessel: stranding 12 boats: sinking 5 boats: stranding on shore
Chiba	Choshi C	0	0	Local G

				<ul style="list-style-type: none"> 32 houses flooded
	Asahi C	12	3	Local G <ul style="list-style-type: none"> 112 houses flooded 254 houses were completely destroyed by tsunami 537 houses were partially destroyed by tsunami 85 houses were completely destroyed by earthquake 772 houses were partially destroyed by earthquake
	Sousa C			Local G <ul style="list-style-type: none"> 18 houses flooded
	Yokoshiba-Hikari T			Local G <ul style="list-style-type: none"> 14 houses flooded Boats are damaged Port facility is damaged
	Sanbu C	1		Local G <ul style="list-style-type: none"> 243 houses flooded
	Kujyukuri T			Local G <ul style="list-style-type: none"> 161 houses flooded
	Oami-Shirasato T			Local G <ul style="list-style-type: none"> No tsynami damage
	Shirako T			
	Chousei V			
	Ichinomiya C	0	0	Local G <ul style="list-style-type: none"> 58 houses flooded; Kaigan and Omura District Farm: 3 ha inundated
	Isumi C			Local G <ul style="list-style-type: none"> 19 houses flooded
	Onjyuku T			
	Katsuura C			
	Kamogawa C			
	Minami-Bousou C			
	Tateyama C			
	Chiba C			Local G <ul style="list-style-type: none"> 2 houses flooded
Shizuoka	Shimoda C 25,549			Local G <ul style="list-style-type: none"> 13 houses; flooded



Distribution of aftershocks; 500 km x 200 km ($M \geq 5.0$)

(Taken from JMA press release)